



**InsituPro™**  
Automated ISH & IHC

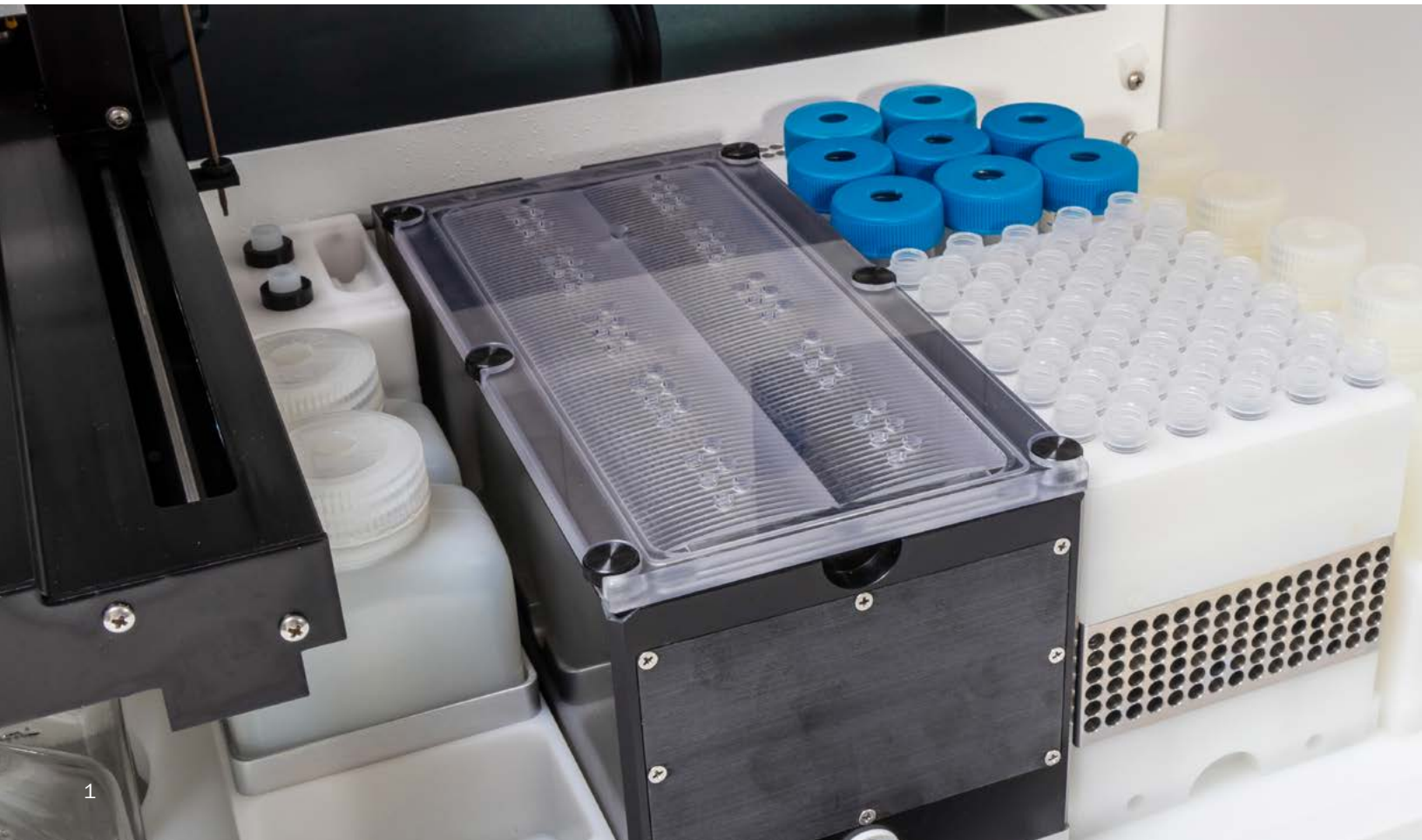


# ISH and IHC Automation for Whole Mounts and Slides

The InsituPro is a dedicated system for automated in situ hybridization (ISH) to prepare samples for detection of DNA or RNA (mRNA, miRNA) and also for immunohistochemistry (IHC) to detect proteins and other antigens. The system automates all of the tedious and repetitive washing and incubation steps for ISH and IHC processes.

The InsituPro easily accommodates both slides and whole mount samples. Easily switch between samples in only minutes. Up to 60 whole mounts/vibratome sections or slides can be processed in parallel with individual probes or antibodies.

- Works with whole mounts, vibratome sections, thin sections on slides, and cells on coverslips
- Used on wide range of organisms (mouse, zebrafish, chicken, Xenopus, Drosophila, Arabidopsis, and many more)
- Fully customizable programs
- 16 buffer positions (2 cooled for preserving delicate antibodies)
- Allows partial recovery of expensive antibodies and probes





## Baskets

# Whole Mount Samples

Whole mount preparations and vibratome sections are processed in separate incubation baskets in keyhole shaped cavities in the specimen tray. The specimen tray allows for heating and cooling between 6°C – 75°C and provides very gentle liquid exchange for even the most delicate samples of the specimens.

- **60 x 5mm inner diameter** (Medaka, Drosophila, Xenopus, small vibratome sections)
- **60 x 9mm inner diameter** (chicken, mouse, medium vibratome sections)
- **32 x 13mm inner diameter** (large vibratome, large specimens)

## Slides

# Thin Sections

Slides with thin sections are mounted on a counter slide forming an independent incubation chamber. Six of these chambers are combined to a slide block and ten of these blocks are mounted vertically into the heated incubation tub. The incubation tub allows for control of temperature and high humidity for optimal performance. Liquid exchange is driven by gravity flow and capillary forces ensure the sections are submerged in buffer.

- **60 x (75mm x 25mm x 1.0mm)**



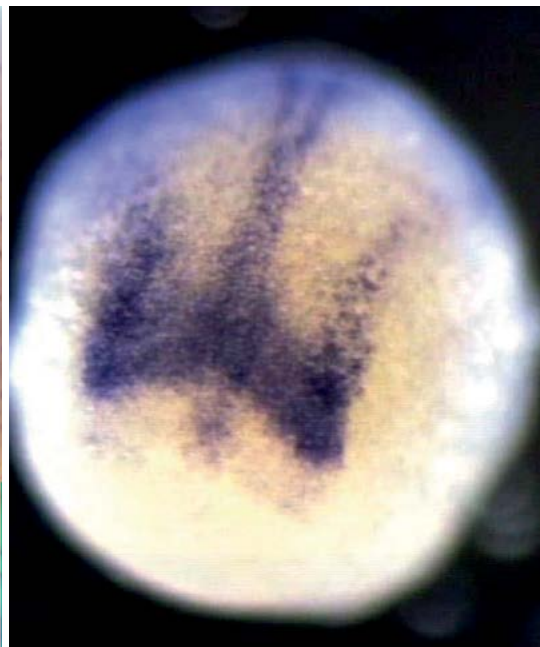
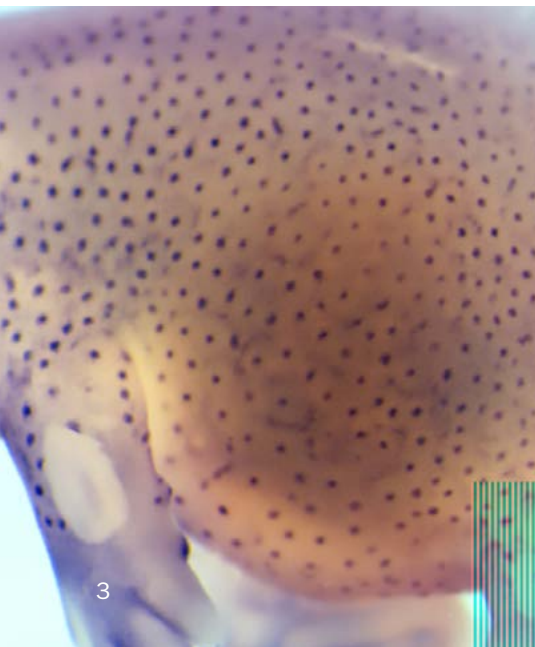
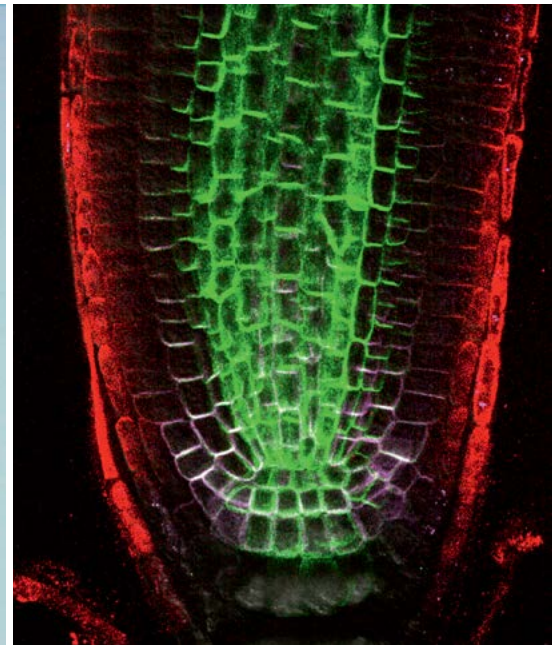


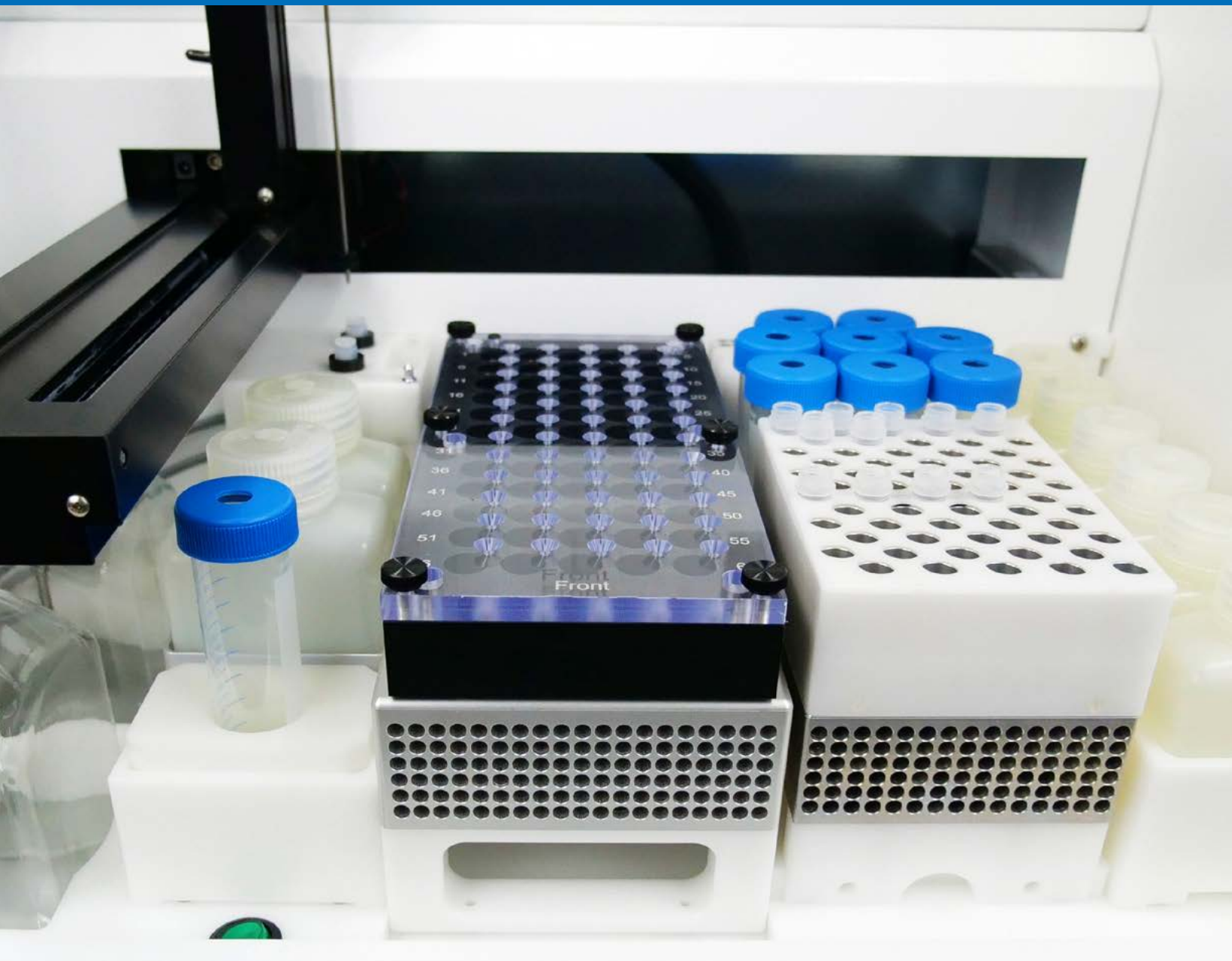
## Established System

# Widely Used

The InsituPro has a strong record for In situ Hybridization and Immunohistochemistry.

- Used at > 300 research groups worldwide
- Cited in > 550 publications
- Applicable to zebrafish, mouse, Ababidopsis, Drosophila, Xenopus, chicken, and more

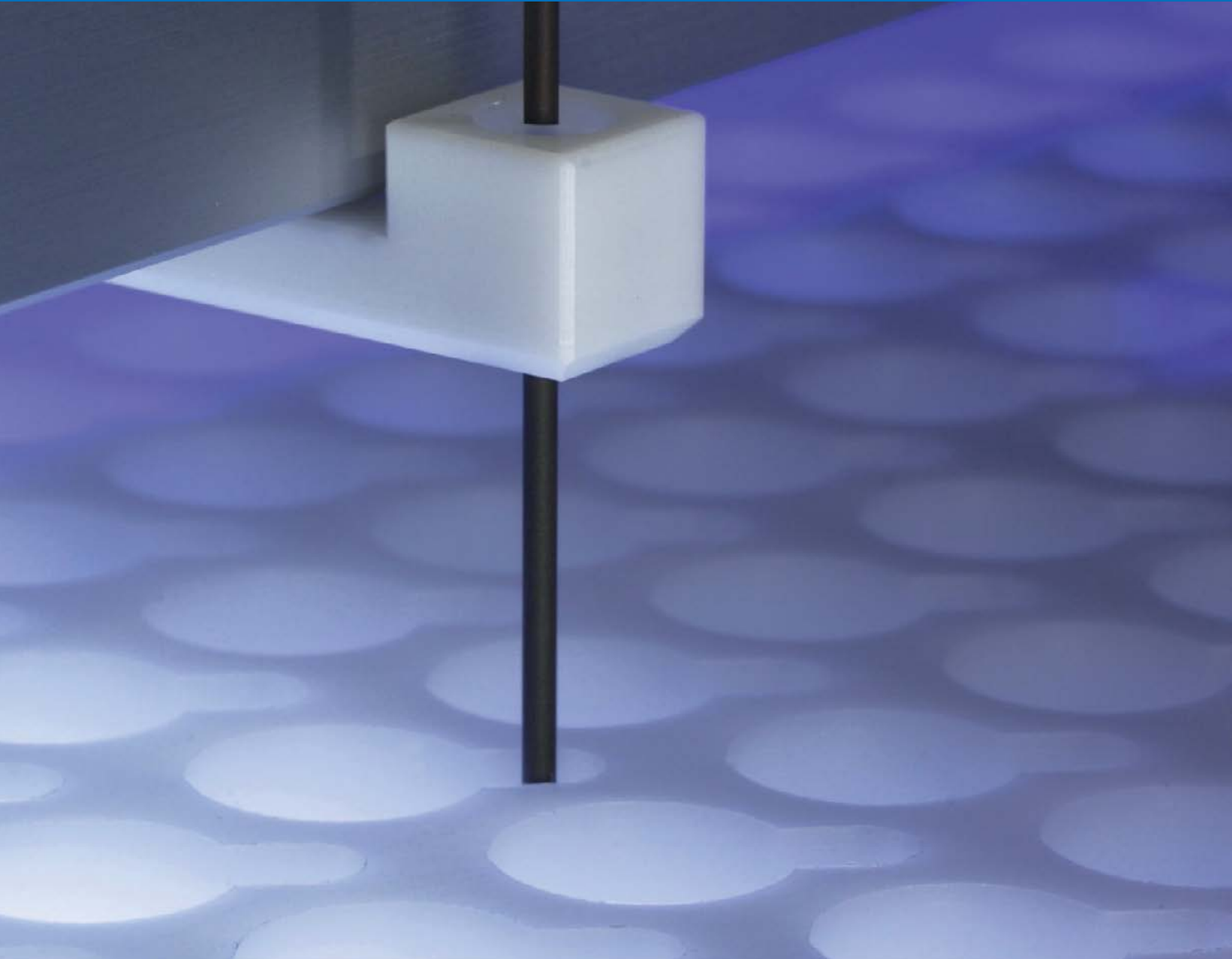




## Protocols

# Easily Adaptable

The InsituPro comes with ready to use protocols for a wide range of species. However, each protocol is easily adaptable and allows full control of all parameters including temperature settings and parallel processing of samples with different incubation times. Individual treatment of each samples is also possible including the use of unique antibodies and probes.



## Open System

# Low Running Costs

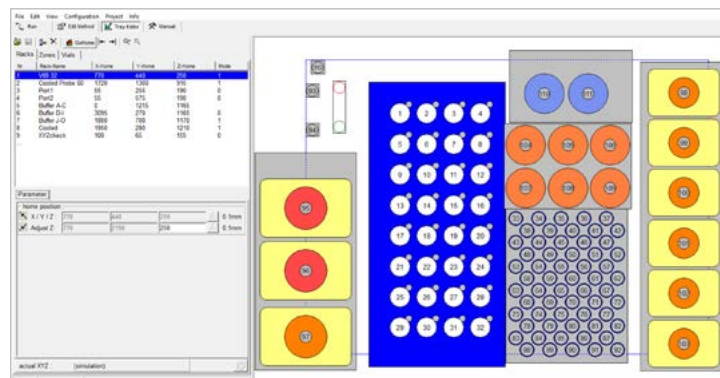
The InsituPro does not require the use of special kits and allows for standard lab buffers to be used. Additionally, the system allows for partial recovery of expensive probes and antibodies that can then be reused for subsequent samples. These features make operating the InsituPro very cost efficient.



# Intuitive Operation Software

The InsituPro is operated by a Windows™ based software running on a standard PC.

- Graphical user interface
- User-tested protocols for a variety of specimens
- Easy method development with template protocols
- Expert level for advanced method development
- Real-time display of instrument operation
- Detailed documentation of each run



## Specifications

Sample size:	Up to 12 mm for whole mounts and vibratome sections
Standard slides:	75 x 25 x 1 mm or 76 x 26 x 1 mm
Temperature range:	6 °C to 75 °C for the basket modules and 10° to 70 °C for the slide module
Buffer positions:	19 plus up to 60 individual probes
Cooled/heated positions:	2x 250 ml heated / 2x 50 ml cooled
Size of buffer vials:	2x 1000 ml, 3x 250 ml, 6x 125 ml, 8x 50 ml, 125 ml bottles can be replaced with 50 ml Falcon tubes using included adapters
Buffer volume/sample:	100 – 1600 µl
Power:	100 - 120 VAC, 50/60 Hz, 3 A or 220 - 240 VAC, 50/60 Hz, 3 A2
Dimensions:	23 in (58cm) W x 21 in (53cm) D x 28 in (69 cm) H
Weight:	137 lb (62 kg)
Sample rack configurations:	Four different configurations for samples varying in shape and size are available. Each configuration is delivered as a complete kit and includes a set of consumables. The basket kits can be used for processing of whole mounts, vibratome sections or cells grown on coverslips.
Small basket kit:	Holds 60 incubation baskets (5 mm diameter, different mesh sizes available)
Medium basket kit:	Holds 60 incubation baskets (9 mm diameter, different mesh sizes available)
Large basket kit:	Holds 32 incubation baskets (13 mm diameter)
Slide kit:	Holds 60 standard microscope slides



We Simplify Science



Over 50,000 systems sold worldwide



CEM has been an ISO-certified facility since 1994



All systems serviced & supported by experts with an average of 15 years of experience



CEM invests 12% of annual revenue into R&D, the result... 11 R&D 100 awards



IQ/OQ/PQ Validation by certified CEM Technicians

---

**United States (Headquarters)**

800-726-3331  
704-821-7015  
info@cem.com

**France**

33 (01) 69 35 57 80  
info.fr@cem.com

**Germany, Austria, Switzerland**

(49) 2842-9644-0  
info@cem.de

**Ireland**

+353 (0) 1 885 1752  
info.ireland@cem.com

**Italy**

(+39)035896224  
info.srl@cem.com

**Japan**

+81-3-5793-8542  
info@cemjapan.co.jp

**United Kingdom**

(44) 1280-822873  
info.uk@cem.com

For distributors in other regions, visit [cem.com/contact](http://cem.com/contact)